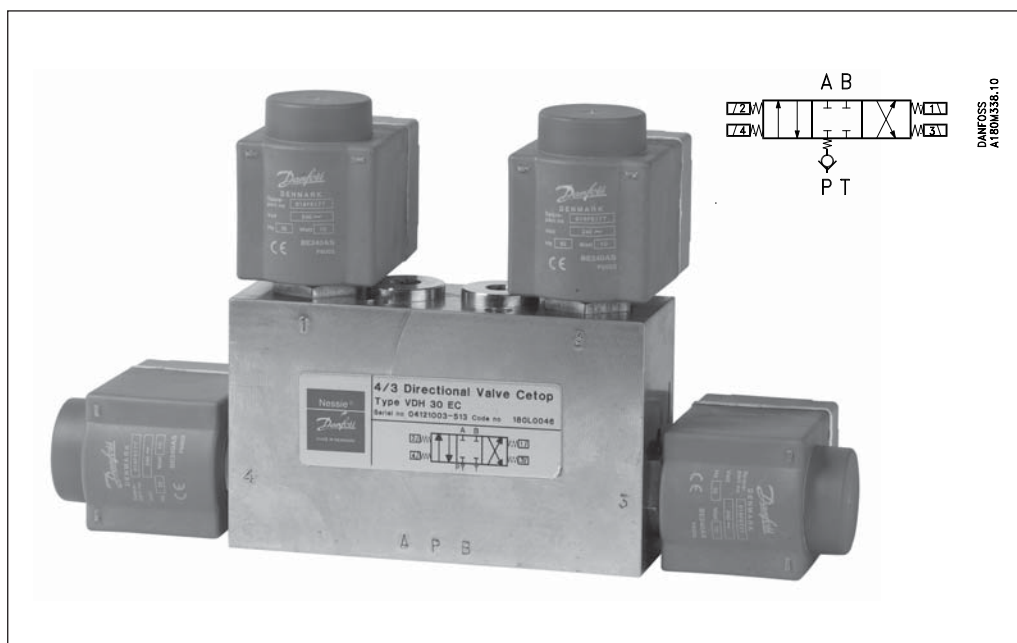


Directional Control Valve type VDH 30EC 4/3 For Cetop 3 flange mounting (ISO 4401) and inline mounting



Applications

Directional valves are used to control the direction of water flow.

The valves are designed for tap water, i.e. without additives. (EU-Directive 98/83/EC).

Function

The directional valves are pilot operated On/Off seat valves electrically activated by 4 coils. The valves are designed according to the seat valve principle where each individual seat valve is controlled by its own pilot stage.

This valve type contains 4 seat valves altogether: two inlet valves and two outlet valves. As each seat valve is individually controlled by its own pilot, this design offers many different valve configurations to the end user.

Advantages

- Installable on all Cetop 3 blocks and inline blocks
- Corrosion resistant surfaces
- Easy-to-clean surfaces
- The seat valve design ensures minimum leakage
- High degree of enclosure, IP67
- Many valve configurations available

Variants

The valve housing comes in standard version in stainless steel AISI 304 (W. No. 1.4301) or AISI 316 (W. No. 1.4401).

The valve is available as a Normally Closed valve (NC) or in a combination of Normally Open (NO) and Normally Closed (NC).

Filtration

The water supply must be filtered through a 10 µm abs., β₁₀-value > 5000 filter.

For further filter details, please contact the Danfoss Sales Organization.

Technical data

Max. pressure port P, A and B *)	140 bar
Return pressure, port T (T ≤ A, B pressure) *)	140 bar
Min. inlet pressure	5 bar
Max flow	30 l/min
Min. flow	1 l/min
Pressure loss	See curve page 3
Opening time when changing direction **)	110 ms
Closing time when changing direction **)	130 ms
Leakage, port P → A, B, T	0 ml/min
Leakage, port A, B → T	0 ml/min
Leakage, port, A, B → P (inlet pressure port P = 0 bar)	max 5 ml/min
Leakage, port A, B → P (inlet pressure port P = pressure port A, B)	0 ml/min
Degree of enclosure	IP 67

*) The pressure in each of the ports P, A and B must always be higher than the pressure in port T
 **) No electrical delay required when changing direction

Temperature

Storage temperature:

- 40°C to +70°C – provided that the valve is drained of fluid and stored “plugged”

Operation on water containing antifreeze:

- Fluid temperature and ambient temperature: -30°C 1) to +50°C

Operation on (clean) water:

- Fluid temperature and ambient temperature: +3°C to +50°C

1) please see paragraph on antifreeze protection

Antifreeze Protection

If a system requires antifreeze protection, Danfoss recommends Dowcall N or Chillsafe mono propylene glycol from the Dow Chemical Company and Arco Chemical Company, respectively. Both antifreezes are biologically degradable and must be used together with demineralized water.

Mixing ratio must be:

- min. 30% antifreeze and 70% demineralized water providing frost protection to -13°C and preventing biofilm in the system.
- max. 50% antifreeze and 50% demineralized water due to increased viscosity, providing frost protection to -30°C.

Code numbers

Valves (without coils)	Function symbol	Weight kg	Code number
VDH 30 EC - NC stainless steel, AISI 304		3,8	180L0046
VDH 30 EC - NC stainless steel, AISI 316		3,8	180L0047
VDH 30 EC - 2xNC +2xNO stainless steel, AISI 304		3,8	180L0050
Activation of valve	Electrical: 12 V d.c., 24 V d.c., 24 V a.c., 110 V a.c., 240 V a.c. Power consumption: 18 W (d.c.), 10 W (a.c.) per coil Manual with permanent magnet		

Code numbers
(continued)

The valves are supplied with screws and O-rings, but without coils.

Cetop 3 blocks and cover plate	Weight kg	Code number
Inline block for 1 valve (P&T direct for VPH15E)	0.8	180L0060
Inline block for 1 valve (A&B same position as 180L0053)	0.8	180L0080
Block for 1 valve	2.4	180L0081
Block for 2 valves	4.4	180L0082
Block for 3 valves	7.3	180L0083
Block for 4 valves	9.6	180L0084
Block for 5 valves	12.1	180L0085
Cover plate*) (for covering-up non-used valve outlets on block)	0.1	180L0079

*) Supplied with screws and O-rings

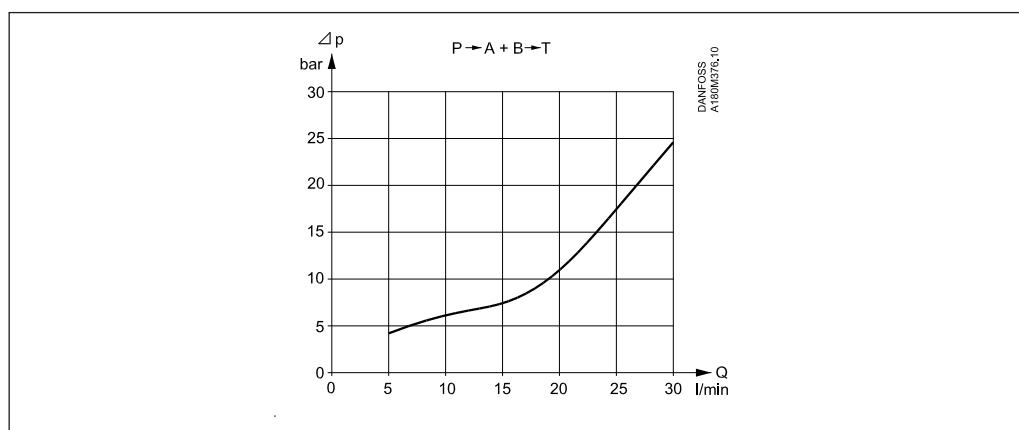
Coil	Coils (clip-on) (NC + NO)
24 V / 50 Hz / 10 W	018F7920
220 V / 50 Hz / 10 W	018F7921
240 V / 50 Hz / 10 W	018F7924
24 V / 60 Hz / 10 W	018F7922
220 V / 60 Hz / 10 W	018F7925
240 V / 60 Hz / 10 W	018F7926
110 V / 50/60 Hz / 10 W	018F7923
12 V d.c. / 18 W	018F7913
24 V d.c. / 18 W	018F7914

For other voltages, please contact Danfoss Sales Organisation for Water Hydraulics.

*) Requires special blocks, please contact Danfoss Sales Organisation for Water Hydraulics.

ATEX -consult the document "Solenoid valves intended for use in ATEX classified areas" 521B1101

Pressure losses at different flows



Available valve configurations

The table below shows the possible valve configurations, depending on which coils are activated.

Diagram showing flow routes through the valve, port lettering and coil numbers.

For VDH 30EC 4/3 NC

For VDH 30EC 4/3 NC + NO

Function	1	2	3	4
	off	off	off	off
	off	on	off	on
	on	off	on	off
	off	off	on	off
	on	off	off	off
	off	off	off	on
	off	on	off	off
	off	off	on	on
	on	on	off	off
	off	on	on	off
	on	off	off	on
	on	on	on	on

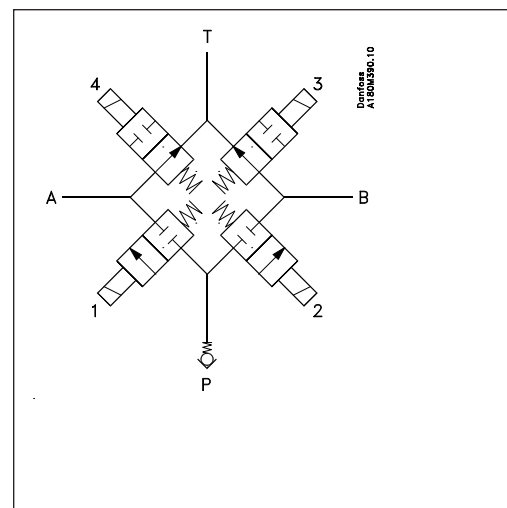
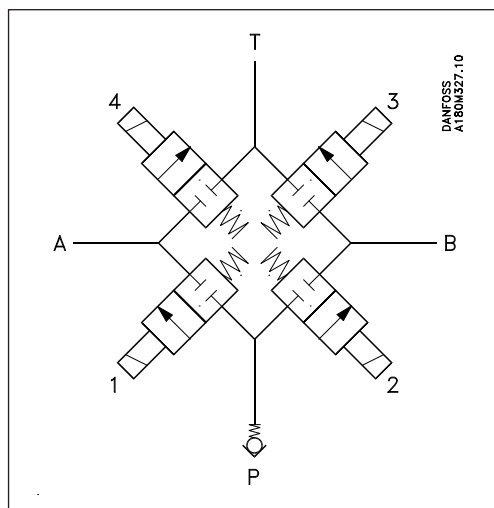
Danfoss
A180M326.10

Function	1	2	3	4
	NC	NC	NO	NO
	off	off	on	on
	off	on	on	off
	on	off	off	on
	off	off	off	on
	on	off	on	on
	off	off	on	off
	off	on	on	on
	off	off	off	off
	on	on	on	on
	off	on	off	on
	on	off	on	off
	on	on	off	off

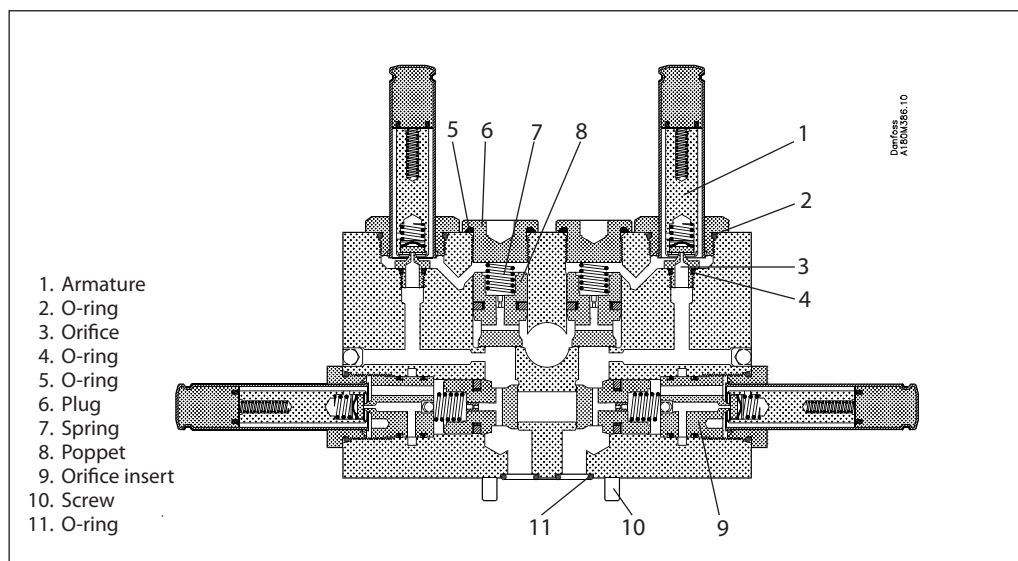
Danfoss
A180M326.10

For VDH 30EC 4/3 NC

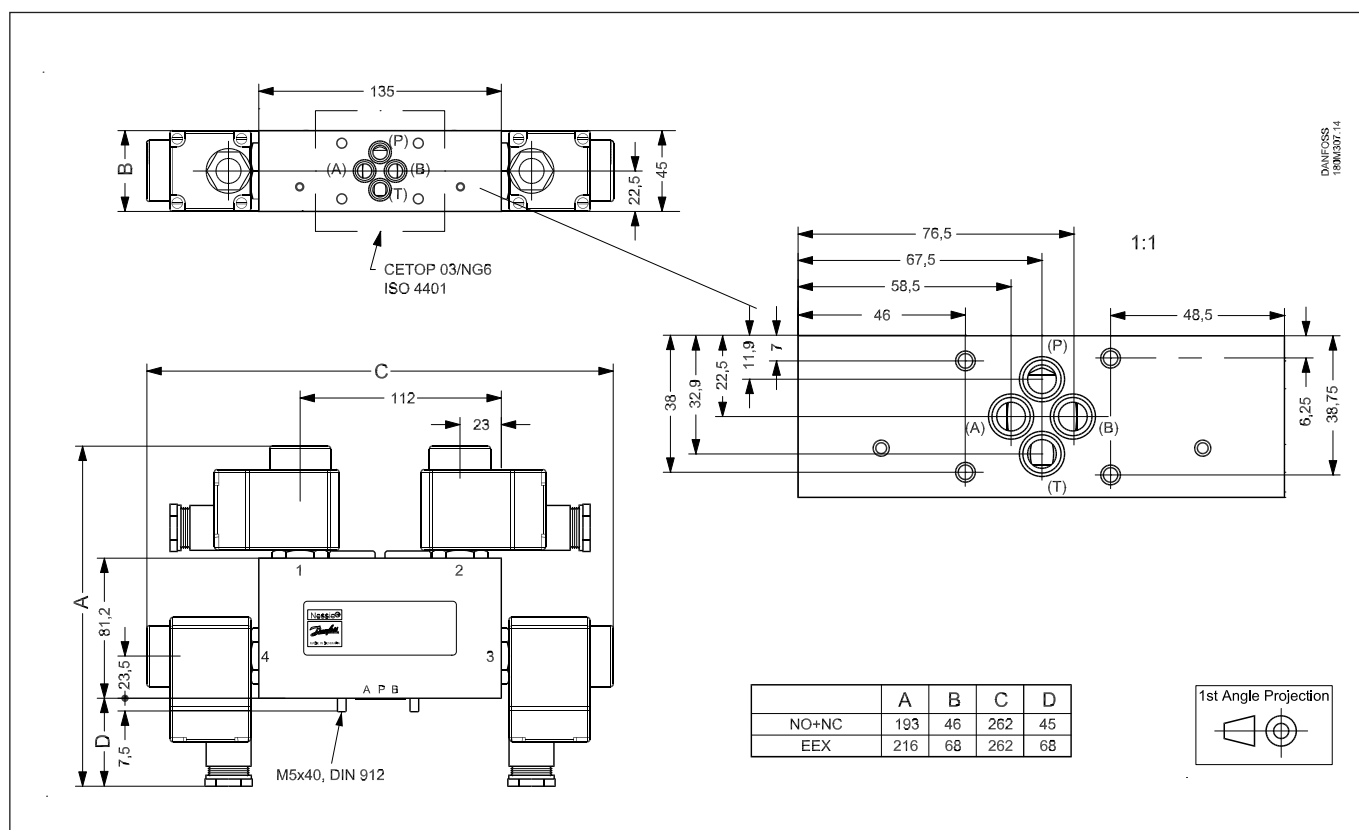
For VDH 30EC 4/3 NC + NO



Cross-section of valve

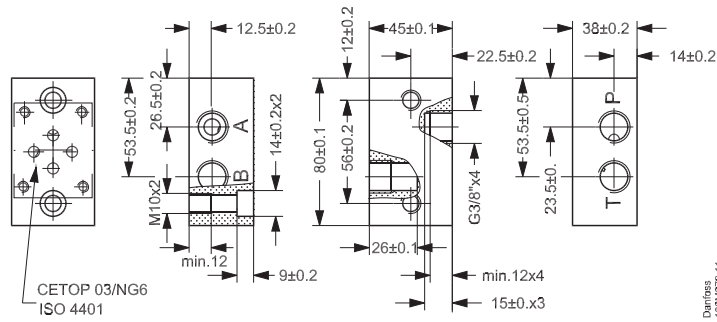


Dimensions (mm)
VDH 30EC 4/3



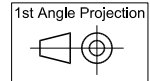
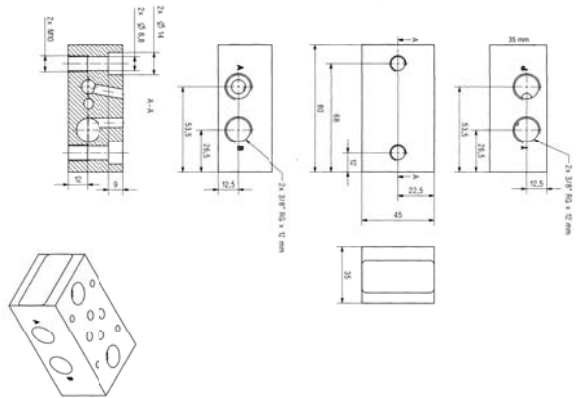
Dimensions (mm)
Inline block for 1 valve

180L0060

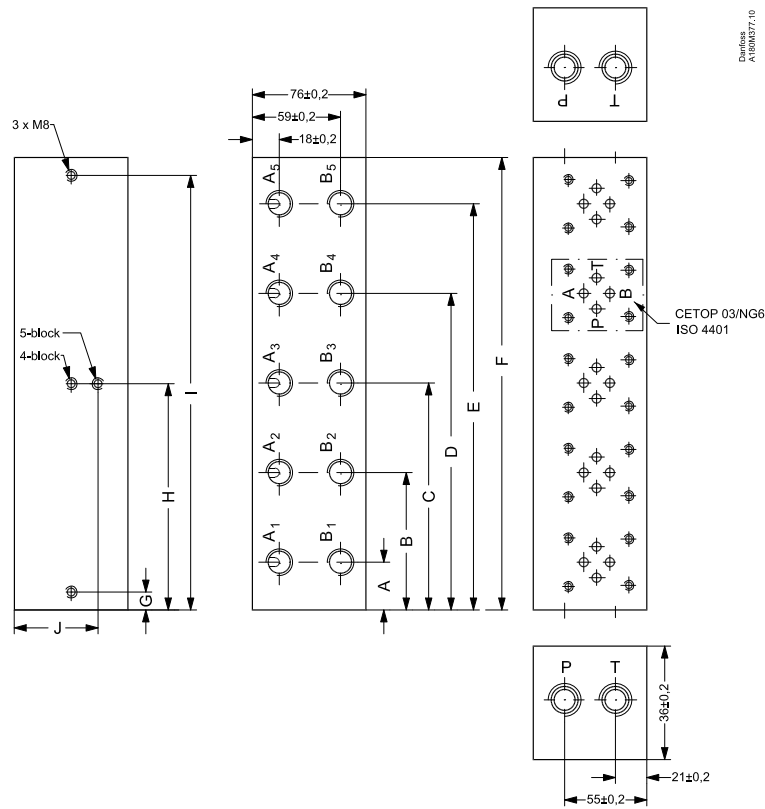


Danfoss
180M278.11

180L0080



Dimensions (mm)
Cetop blocks

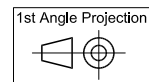


Danfoss
A180M877.00

P and T ports:
G 1/2, 15,5 mm deep

A and B ports:
G 3/8, 13 mm deep

	A	B	C	D	E	F	G	H	I	J
Block for 1 valve	31	-	-	-	62	12	-	50	-	-
Block for 2 valves	31	81	-	-	112	12	-	100	-	-
Block for 3 valves	31	91	151	-	182	12	-	170	-	-
Block for 4 valves	31	91	151	211	-	242	12	121	230	38
Block for 5 valves	31	91	151	211	271	302	12	151	290	58



Code numbers

Spare parts	Code number
Poppet kit (position 8)	180L5005
Armature kit, NC (pos. 1)	180L5002
Armature kit, NO (pos. 1)	180L5010
Orifice kit	180Z0099 + 180Z0098

O-ring for mounting on block	Dimensions	Code number
NBR, 1 pc. (pos. 11)	9.25 x 1.78	633B1243

Assembly screw	Tightening torque	Code number
M5 x 40 ISO 4762 A4, 1 pc (pos. 10)	7 Nm	681X0162

Tools	Application	Code number
Special tool for orifice insert	Mounting/dismounting of orifice Orifice insert in valve housing: 12 Nm ±2 Nm Armature to be screwed into the valve housing: 60 Nm ±2 Nm	180Z0034
Spool tool included in 180L5005	Mounting of spool	
Permanent magnet	For manual activation of valve	180Z0212

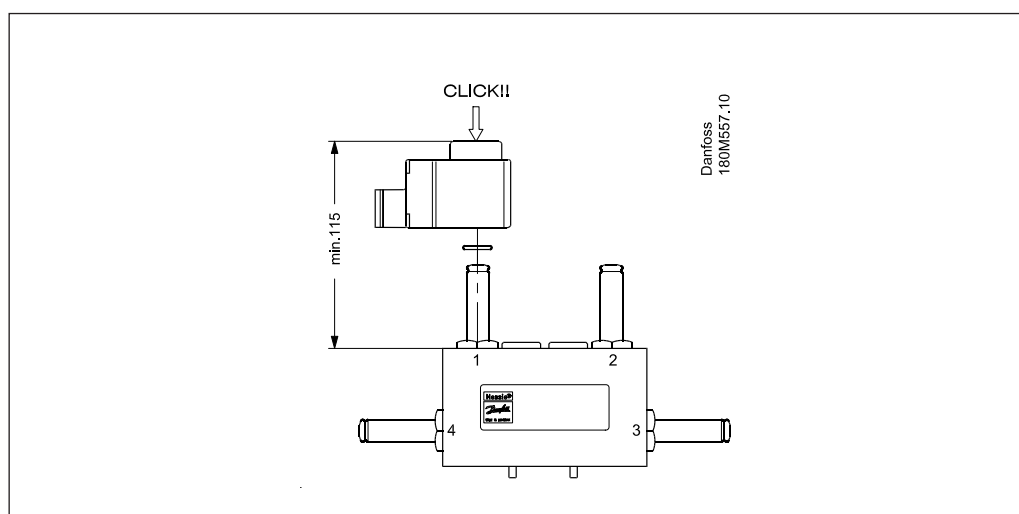
For further details on coils, please see 521B0980.

Mounting of valve on cetop block

The valve is designed to be mounted on a block with CETOP 3-port connection. Four stainless steel screws and four O-rings are supplied with the valve for mounting. Remember to smear/

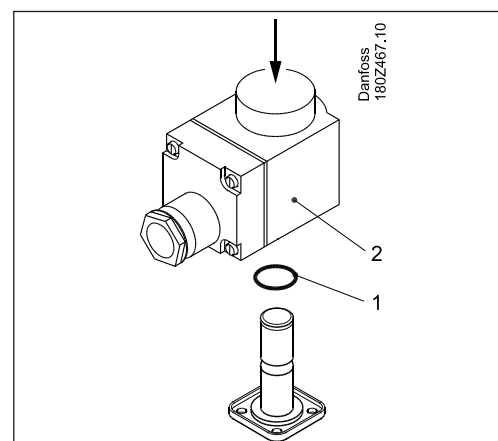
spray the threads on the screws with Molykote® D pasta from Dow Corning, or Klüber UH1 84-201 from Klüber lubrication, before mounting the valve.

Mounting of coils on valve

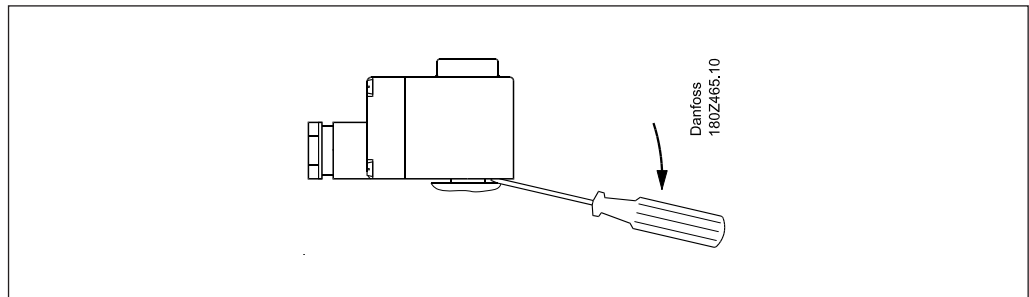


Coil on valves with short armature tubes (NC and NO valves)

1. Place the o-ring on the armature tube.
2. The coil is clicked on by means of a light pressure by hand – without using tools.



Dismounting



Danfoss can accept no responsibility for possible errors in catalogues, brochures and other printed material. Danfoss reserves the right to alter its products without notice. This also applies to products already on order provided that such alterations can be made without subsequential changes being necessary in specifications already agreed. All trademarks in this material are property of the respective companies. Danfoss and the Danfoss logotype are trademarks of Danfoss A/S. All rights reserved.



DK-6430 Nordborg
Denmark